

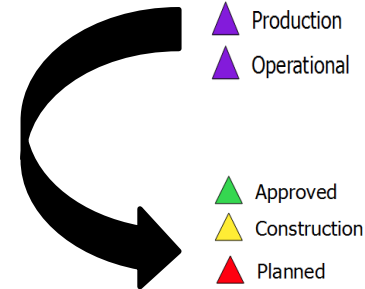
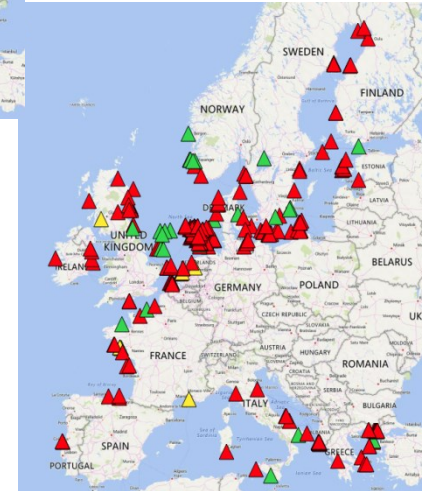
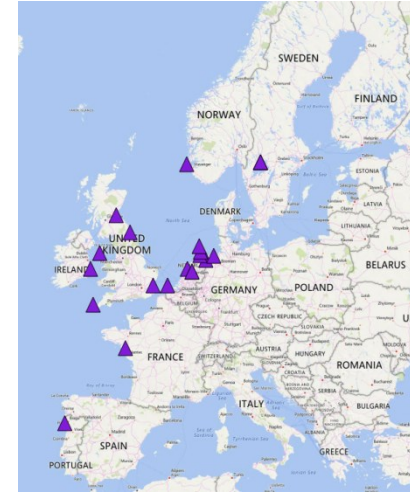


Willem Stolte
Joan Sala
Lilia Angelova
Johan Van de Wauw
Annette Zijderveld

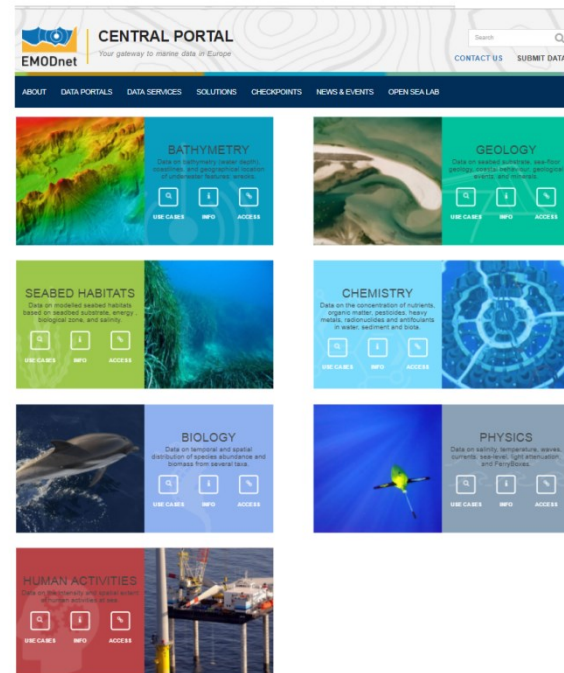
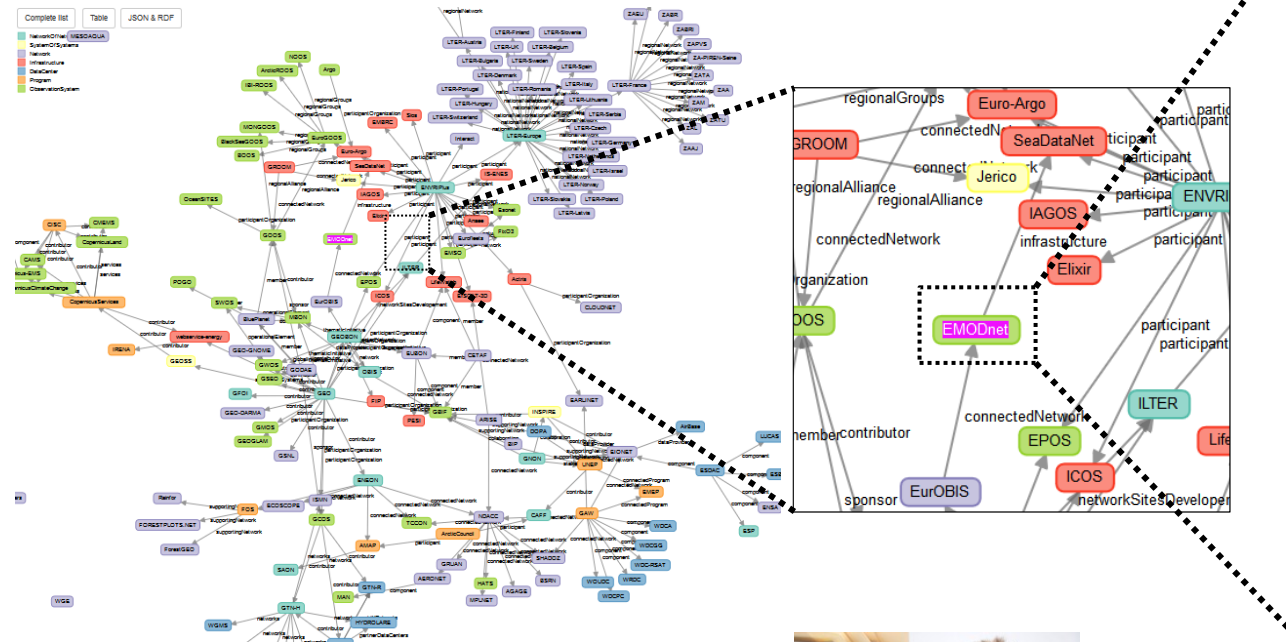
EIA Wizard [Environmental Impact Assessment]



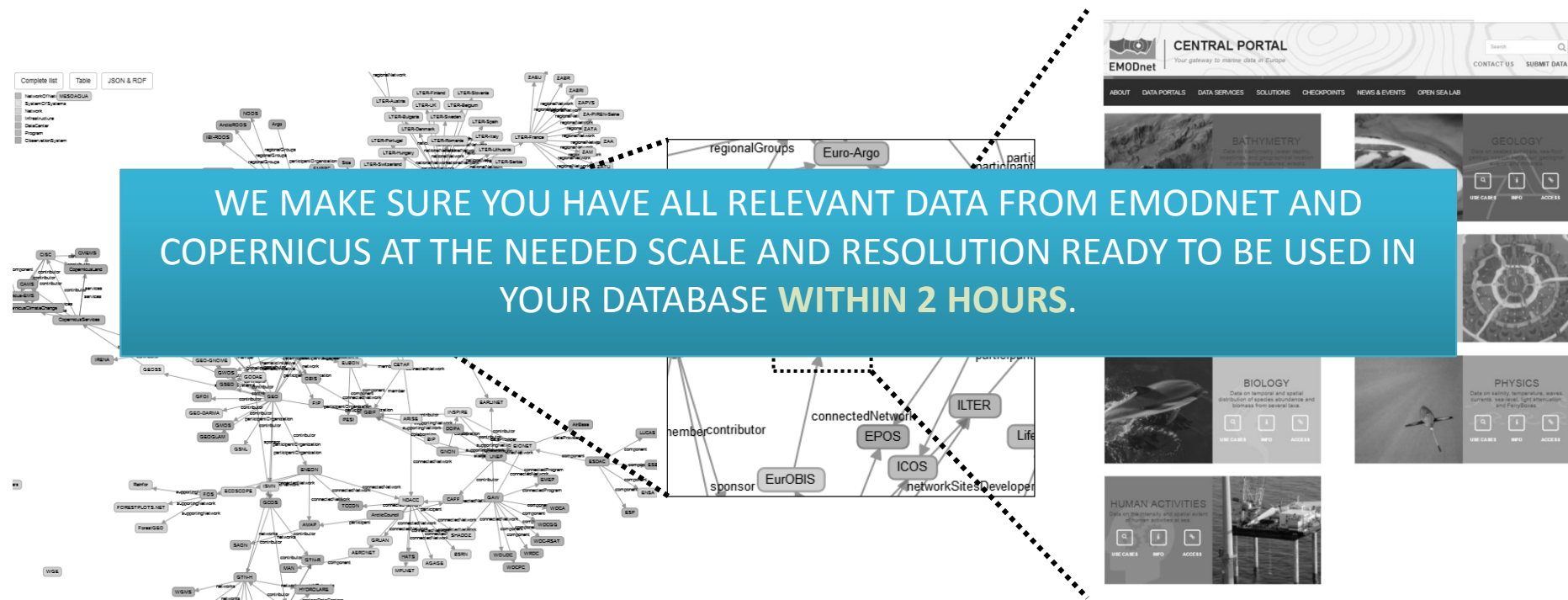
Background



The problem



The problem



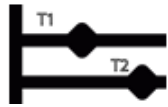
WE MAKE SURE YOU HAVE ALL RELEVANT DATA FROM EMODNET AND COPERNICUS AT THE NEEDED SCALE AND RESOLUTION READY TO BE USED IN YOUR DATABASE **WITHIN 2 HOURS.**



Selection



Area of Interest

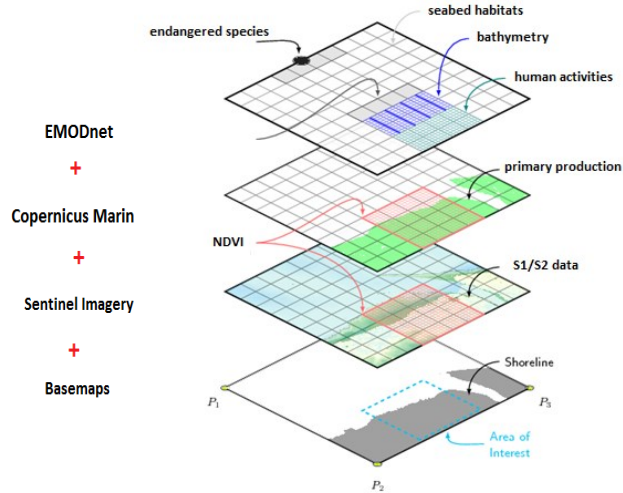


Time span



Depth

Crop and download



EMODnet

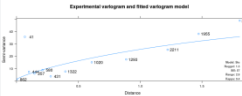
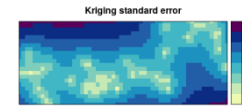
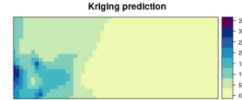


Scientific and
Other Access

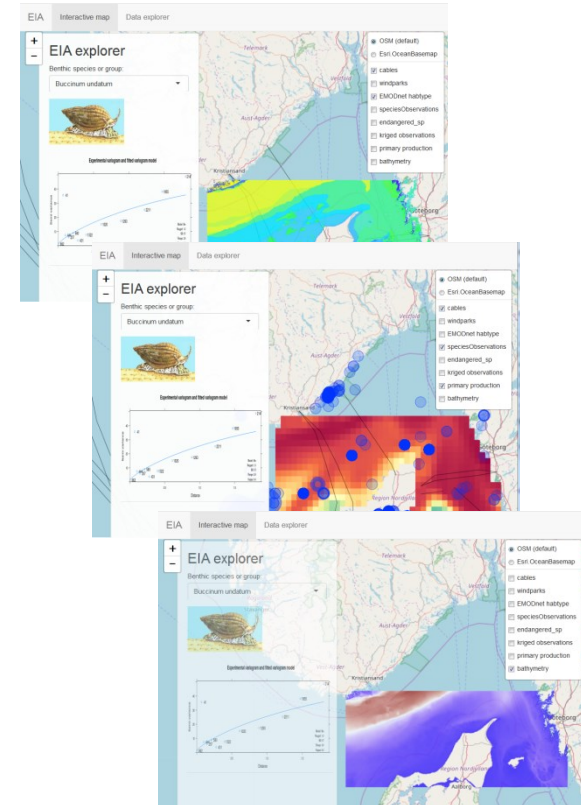
**COPERNICUS
MARINE ENVIRONMENT MONITORING SERVICE**

Providing PRODUCTS and SERVICES for all marine applications

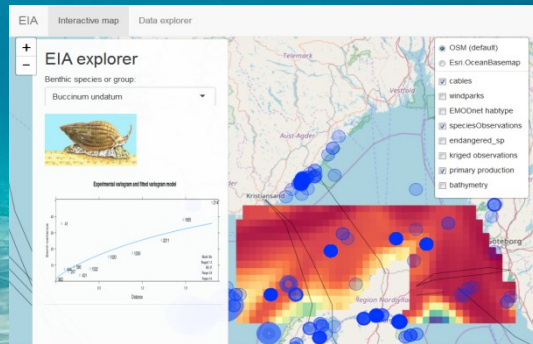
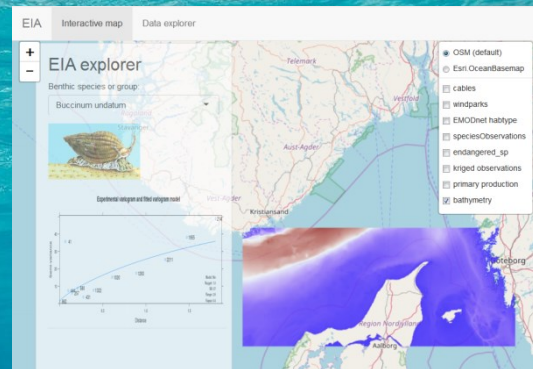
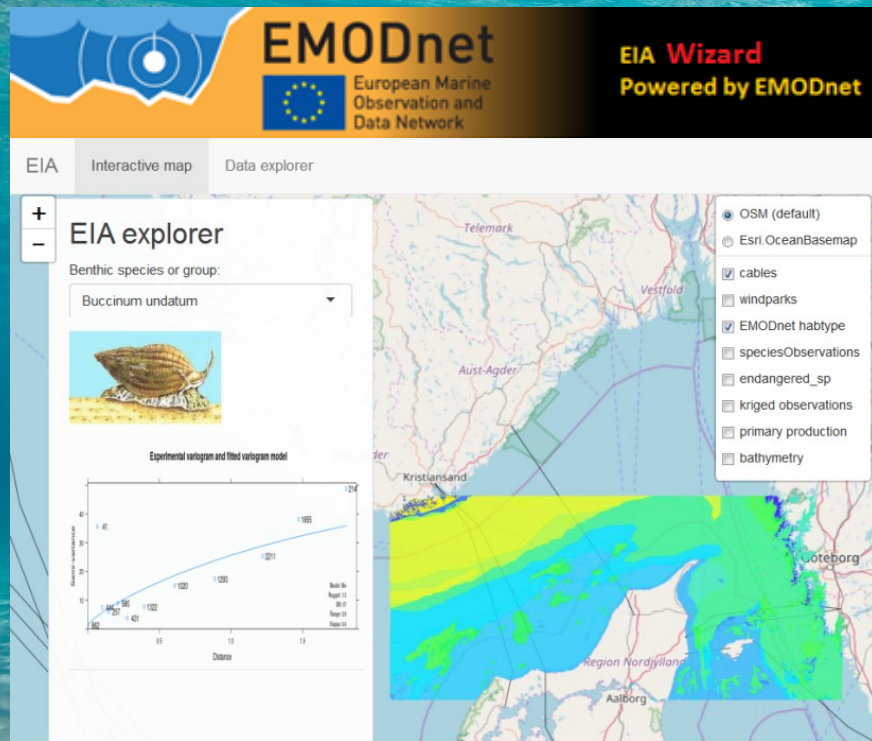
Modelling



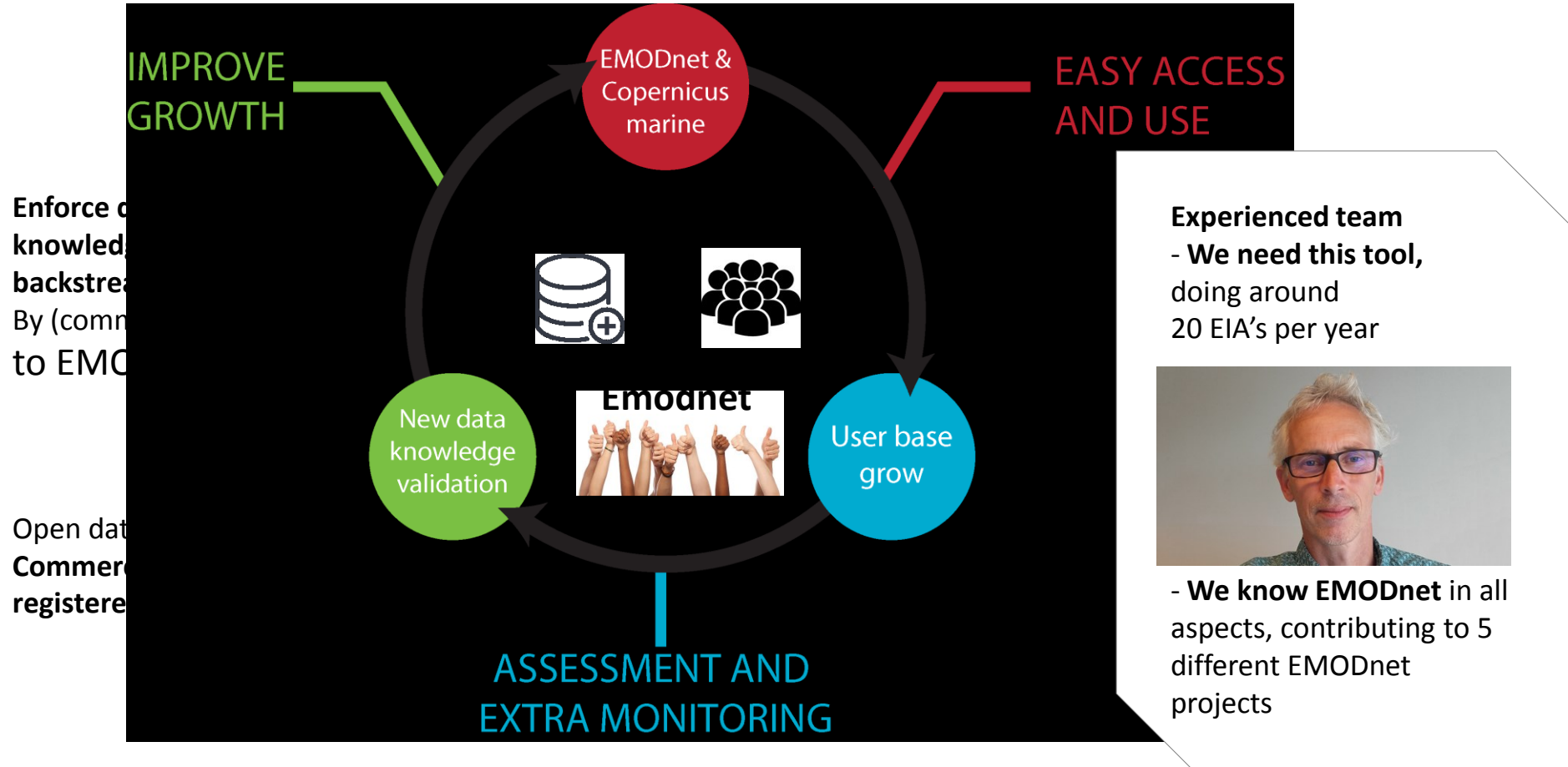
Visualization



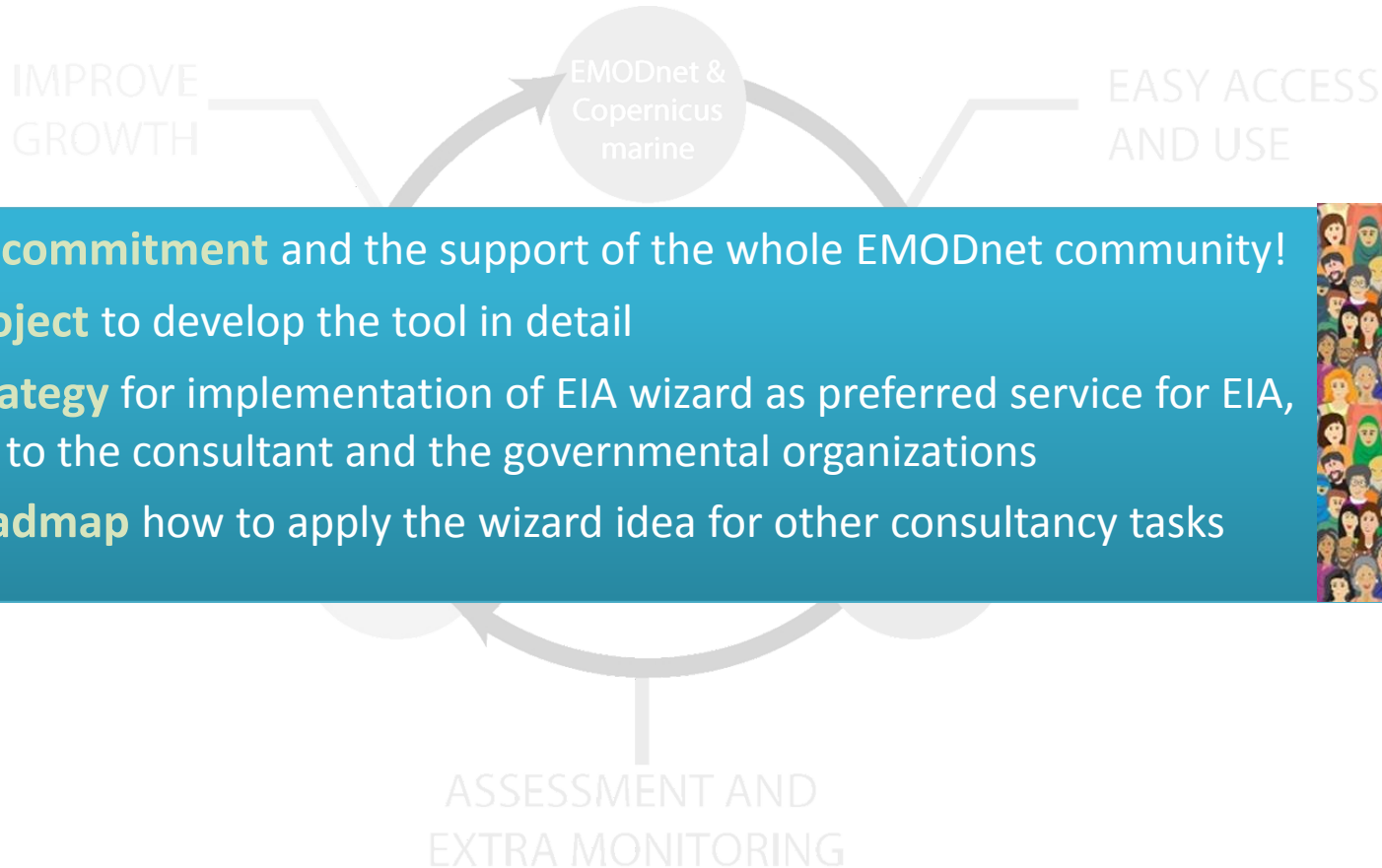
Live DEMO



It will work



We need



- Your **commitment** and the support of the whole EMODnet community!
- A **project** to develop the tool in detail
- A **strategy** for implementation of EIA wizard as preferred service for EIA, both to the consultant and the governmental organizations
- A **roadmap** how to apply the wizard idea for other consultancy tasks

