



Before EMODnet, the objectives & its impact on the marine data landscape and the life of its users: a personal view

Webinar - EMODnet
A decade of achievements
connecting marine data to knowledge

Koen Verbruggen

Geological Survey Ireland
koen.verbruggen@gsi.ie
@k_verbruggen

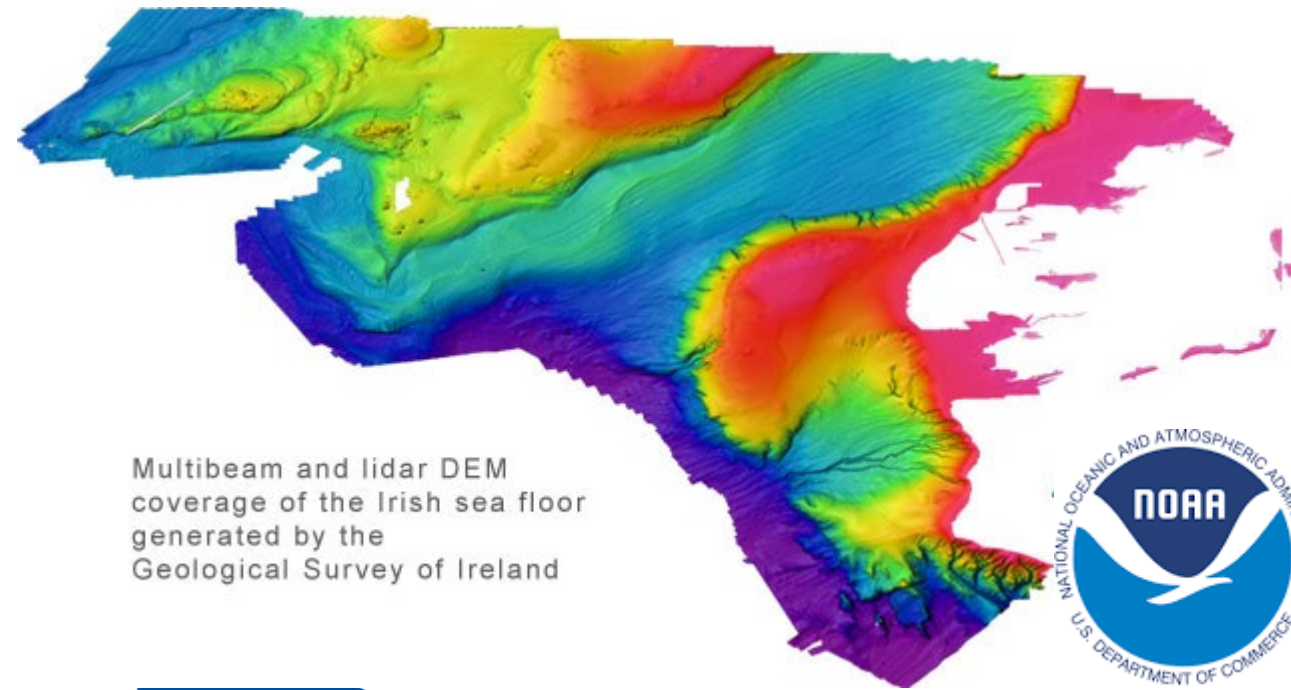


Before EMODnet Separate projects, silos & standards!

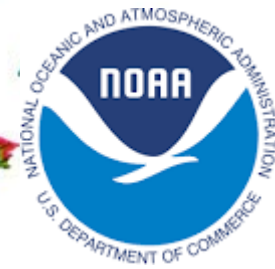
GSI both marine geologists & seabed mappers with Marine Institute



The Geological Surveys of Europe



Multibeam and lidar DEM coverage of the Irish sea floor generated by the Geological Survey of Ireland



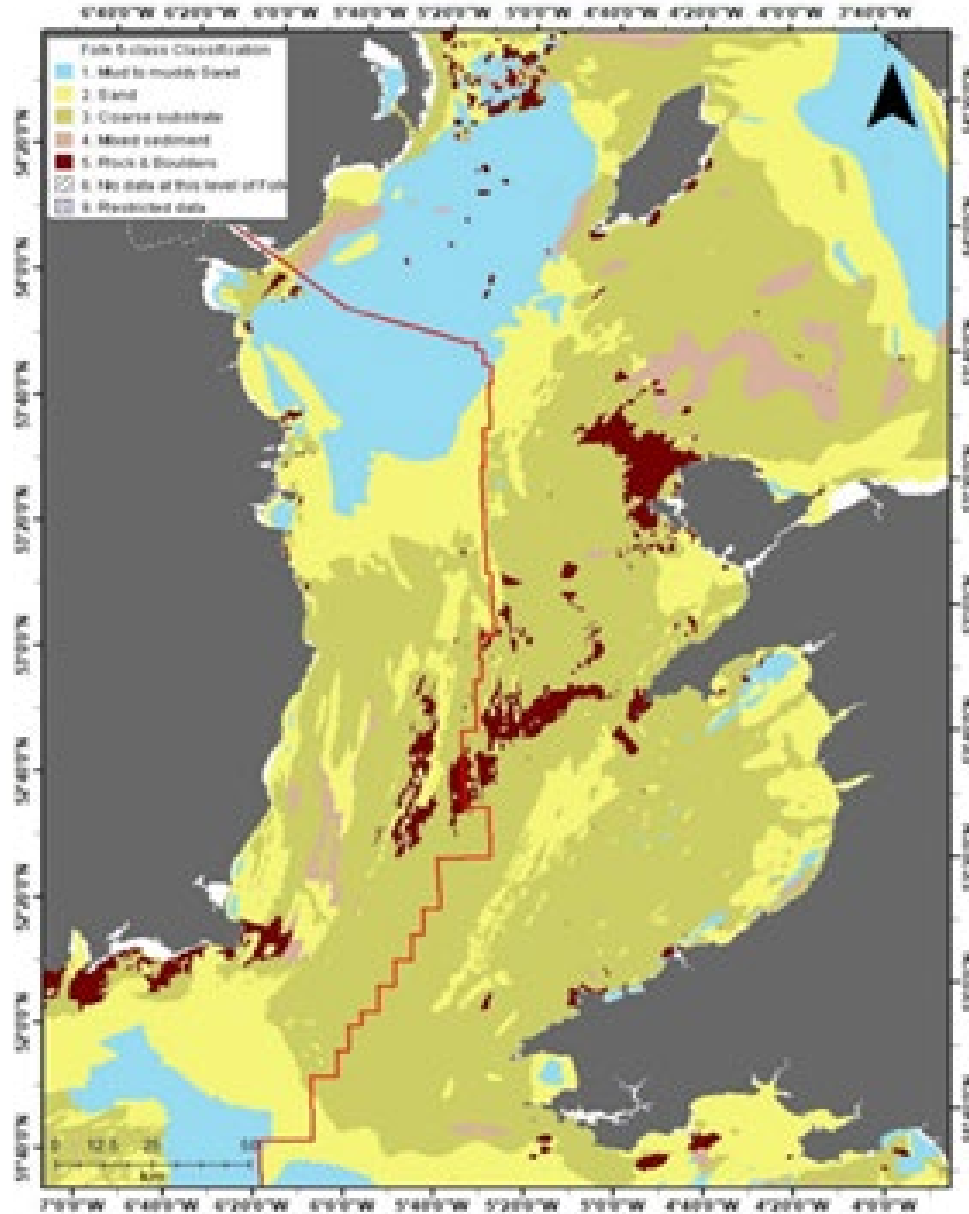
EMODnet Geology; Seamless marine geology maps & data



The Geological Surveys of Europe

Marine Expert Group
Direction & budget!
Stronger organisations- Best Practice
Smaller organisations- Data online
or first ever marine geology budget!

Marine geology without borders!
Now supporting ORE development



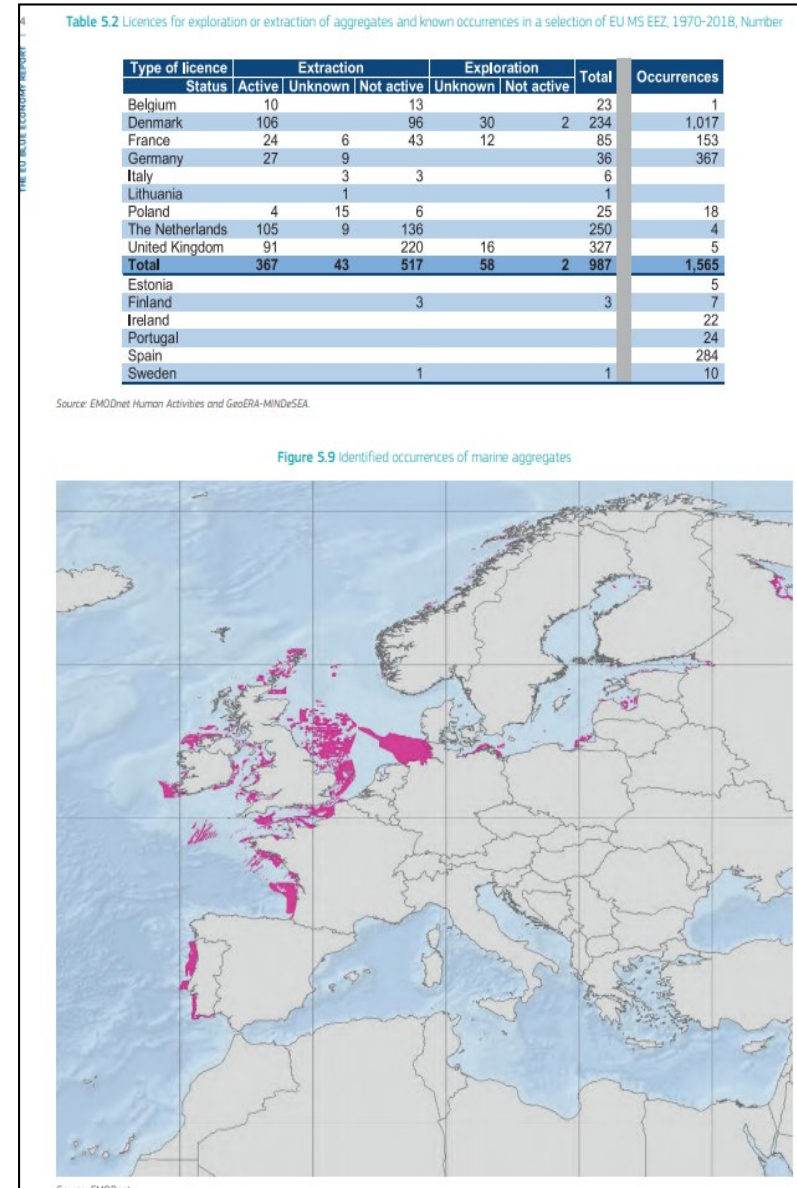
INFOMAR data supports offshore energy development and MSP in the Irish offshore via the EMODnet Geology portal

- *Quarterly Journal of Engineering Geology and Hydrogeology 2020.*

Fig. 9. Seabed substrate map from the EMODnet Geology data portal showing substrate type for the area of interest in the Irish Sea. Red line indicates Ireland's Exclusive Economic Zone. EMODnet Geology, 2016 seabed substrate 1: 250 000 - Europe © EMODnet Geology, European Commission, 2016. Available at www.emodnet-geology.eu/geonetwork/uis/fm/catalog.search#/home (last accessed September 2019).



EMODnet Geology; Aggregate data underpinning economics



EMODnet Geology: Best practice in Coastal Monitoring-1

Critical Climate Change role



Scroll below the map for general information and instructions. For better usability on small screens, click the fullscreen button.

EMODnet Geology

Powered by EGD

For desktop GIS: WMS WFS

Base layers

Layers

Seabed Substrate

Sea-floor Geology

Coastal Behavior

Coastal migration - satellite data

© 2019 - TNO - WP6

Zoom in for more details

The map looks best with [satellite imagery background](#).

Coastal migration - satellite data

- Erosion (coastline retrogradation)
- Stable (imperceptible change)
- Accretion (coastline progradation)

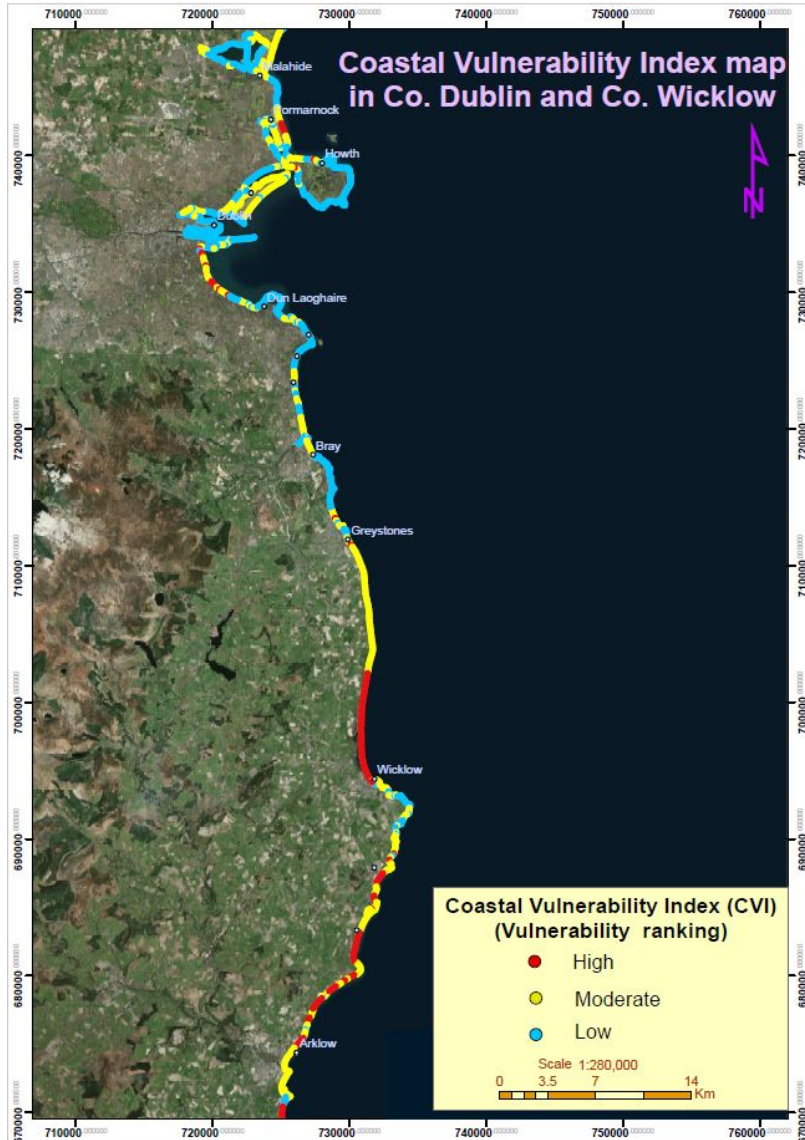


EMODnet Geology: Best practice in Coastal Monitoring -2

Critical Climate Change role - Irish projects



Geological Survey
Suirbhéireacht Gheolaíochta
Ireland | Éireann



ESA-GSI: Coastal Erosion from Space



CHERISH

Newid Hinsawdd a Threftadaeth yr Arfordir
Climate Change and Coastal Heritage
Athrú Aeráide agus Oidhreacht Chultúrtha



3/9/2020

New Irish Gov initiative
GSI on Technical subgroup



Bathymetry Data Portal



BATHYMETRY

Understanding the topography of the European seas

Free search



[CONTACT](#)

[SUBMIT DATA](#)

[APPROACH](#)

[METADATA & DATA](#)

[DATA PRODUCTS](#)

[NEWS](#)

[PROMOTION](#)

[PARTNERS](#)

[HELPDESK](#)

© HCMR

Developing and providing a harmonised Digital Terrain Model (DTM) for the European sea regions

SURVEY DATA SETS

CDI Data Discovery and Access service

[READ MORE](#)



EMODnet DTM

Bathymetry Viewing and Download service

[READ MORE](#)



COMPOSITE DTM

Sextant Catalogue service

[READ MORE](#)



Bathymetry DTM resolution

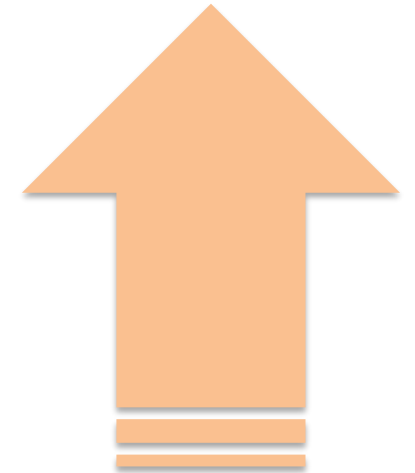


Phase III (2017-2020) produced a **multi-resolution DTM** with overall resolution increased from 231m to **116m**, with coastal high resolution DTM's provided where available & 3D visualisation

Phase II (2013-2016) produced a **DTM of 231m** resolution with extended coverage and improved portal functionality

Phase I (2009-2012) produced a **DTM of 463m** resolution and created the portal for viewing and downloading the data

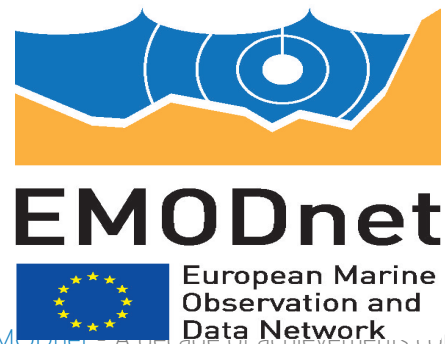
**High resolution
DTM=116m**



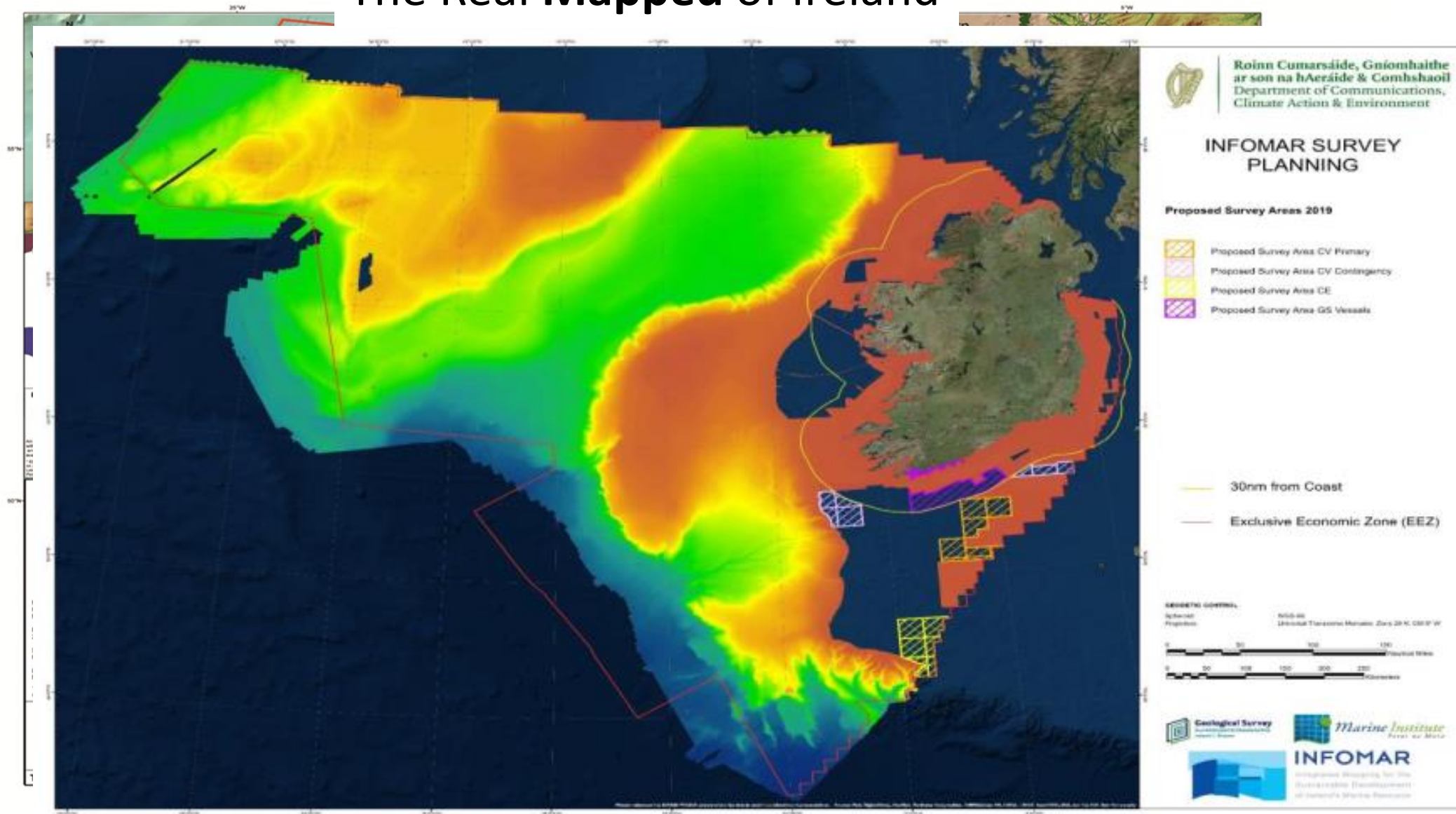
**Low resolution
DTM=463m**

Value to INFOMAR & Ireland

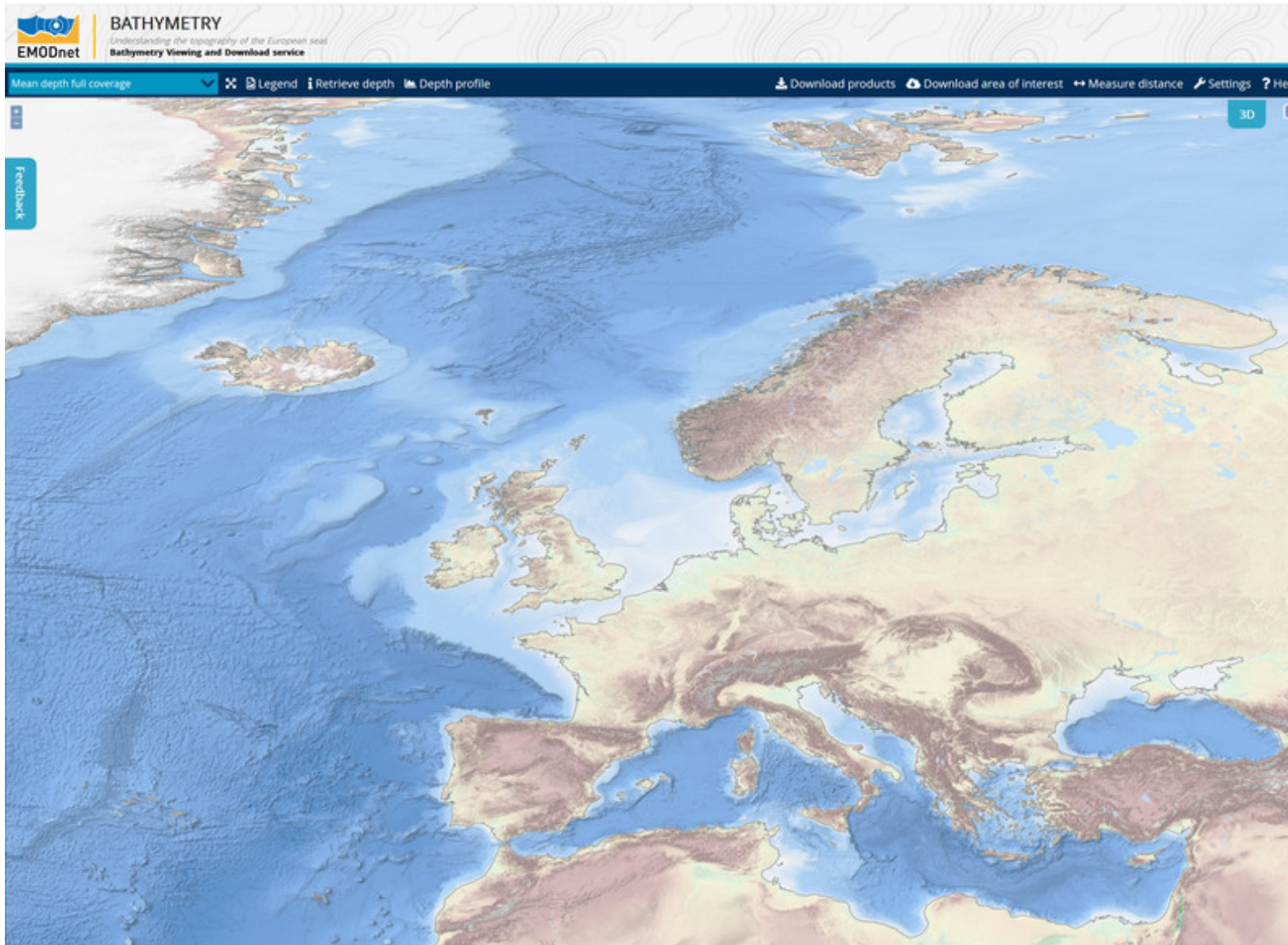
- High-resolution INFOMAR data **visible & accessible** across European data portals and web services
- Forum for **engagement, dialogue & collaboration** addressing common marine data sharing **challenges**
- Opportunity to deliver data products '**adding value**'
- New approaches to our **data management** e.g. INSPIRE compliant, FAIR principles
- Personnel **capacity building**
- Influencing the future direction and development of **products and services**
- **Building trust & relationships across Europe**
- **Network of not just machines & data servers but people!**



The Real Mapped of Ireland



EMODnet The Real Map of Europe!





www.emodnet.eu

Your gateway to marine data in Europe

