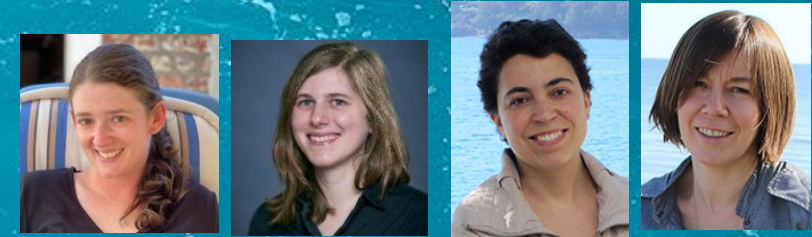




# EMODnet Secretariat perspectives

Webinar - EMODnet  
A decade of achievements  
connecting marine data to knowledge



Jan-Bart Calewaert

[Janbart.calewaert@emodnet.eu](mailto:Janbart.calewaert@emodnet.eu)  
Head, EMODnet Secretariat





# EMODnet Secretariat perspectives

Webinar - EMODnet  
A decade of achievements  
connecting marine data to knowledge



Jan-Bart Calewaert

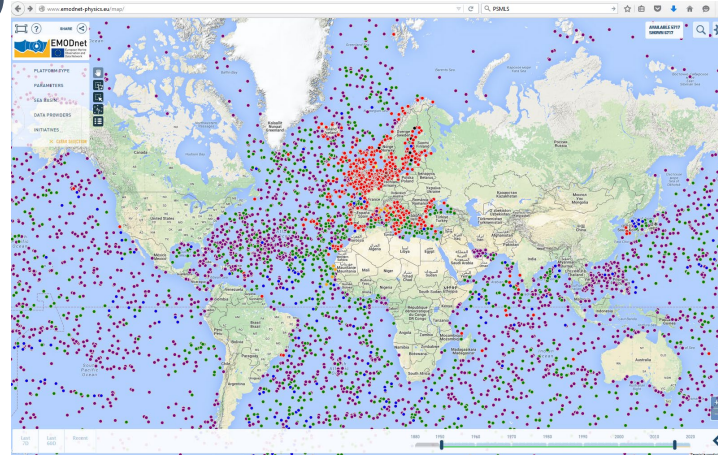
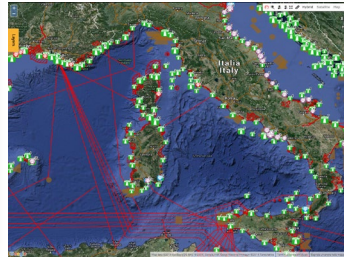
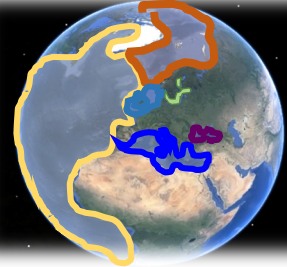
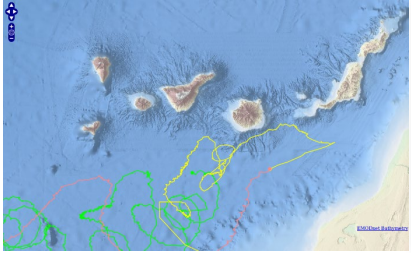
[Janbart.calewaert@emodnet.eu](mailto:Janbart.calewaert@emodnet.eu)  
Head, EMODnet Secretariat



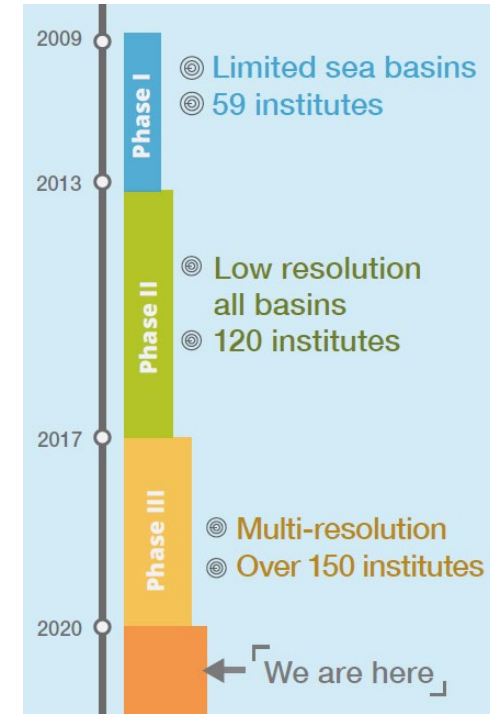
# EMODnet evolution – 2009-2020



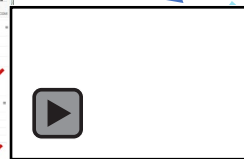
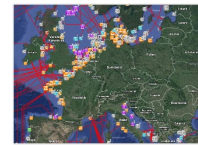
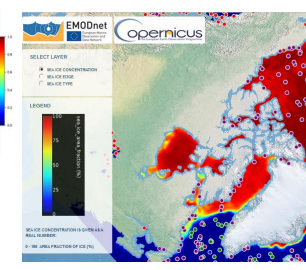
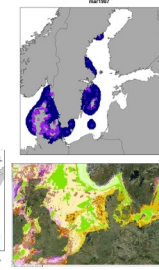
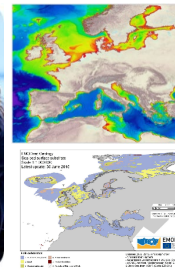
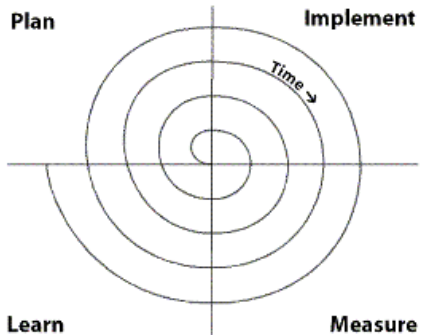
- From regional to pan-European coverage and onwards to global remit



- From small network to a movement - bringing people & ideas together

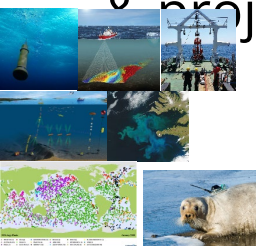


- From prototypes to a fully operational, mature and user-driven distributed infrastructure



# EMODnet – An evolving, open and inclusive network

- From 59 organisations at the onset to more than 130+ organisations
- From low resolution to **multi-resolution**
- **Working together** with major national, EU & global observation & data initiatives, infrastructures & projects



National, regional and European ocean observing and monitoring programmes

**EMODnet**

Data Collection Framework (DCF) for fisheries

- Industry (marine/maritime)
- Research
- Informed policy and environmental management
- Assessing, forecasting and risk prevention
- Informed society & ocean literate citizens



- **Join the network and movement – become an Associated Partner!**

→ Flexible, transparent and straightforward - Allows to contribute to and benefit from EMODnet

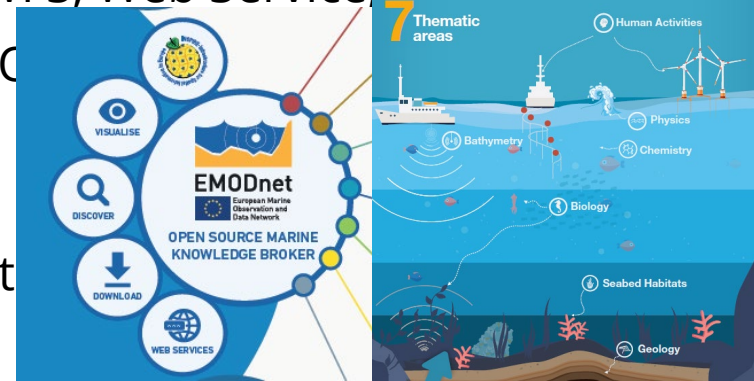
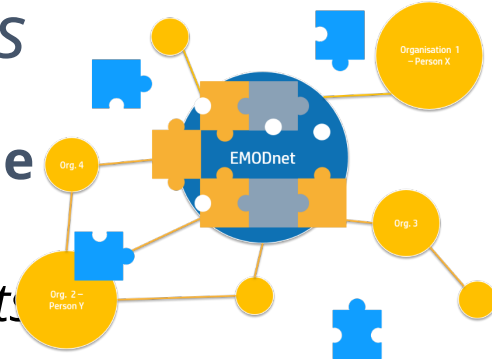
> <https://www.emodnet.eu/en/emodnet-associated-partners>

# More than access to *Data & Products*

*EMODnet* is foremost a network, **Connecting People**  
**Connecting Organisations**

**Added value** *well beyond provision of data/products*

- **Sustained service:** long term EU data initiative supported by EC (via DG MARE) -> trust among data centres and users
- **Widening thematic & geographic coverage:** highly **multidisciplinary**; pan-European & increasingly global
- **Reduce fragmented** marine data landscape → convergence towards coordinated, **interoperable data sharing framework**
- **Platform for collaboration** & exchange of knowledge: *brings together key EU providers, aggregators/integrators, networks & infrastructures e.g. EuroGOOS/ROOSs, CMEMS, NOCDs, SeaDataNet, OBIS, ICES, PANGAEA, RSCs, Hydr. Offices, MRIs, Geological surveys, and many more...*
  - Stimulate adoption of **common solutions and standards**
  - Facilitate down- and up-stream **integration and interoperability** (WMS, WFS, Web Service, etc.)
- **Attract more data providers & platforms:** with Data Ingestion Facility, EMODnet private companies make their data available for re-use.
- **Raise visibility** of Europe's wealth of marine observations & data resources
- **Change culture** towards open data sharing practices & increased data reuse
- **Strengthen engagement/involvement of stakeholders** and increase their awareness



# Want to know more?

- Download & Read the Festive edition of our Annual Report 2019
- <https://www.emodnet.eu/>





[www.emodnet.eu](http://www.emodnet.eu)

*Your gateway to marine data in Europe*

