



The proof of the pudding

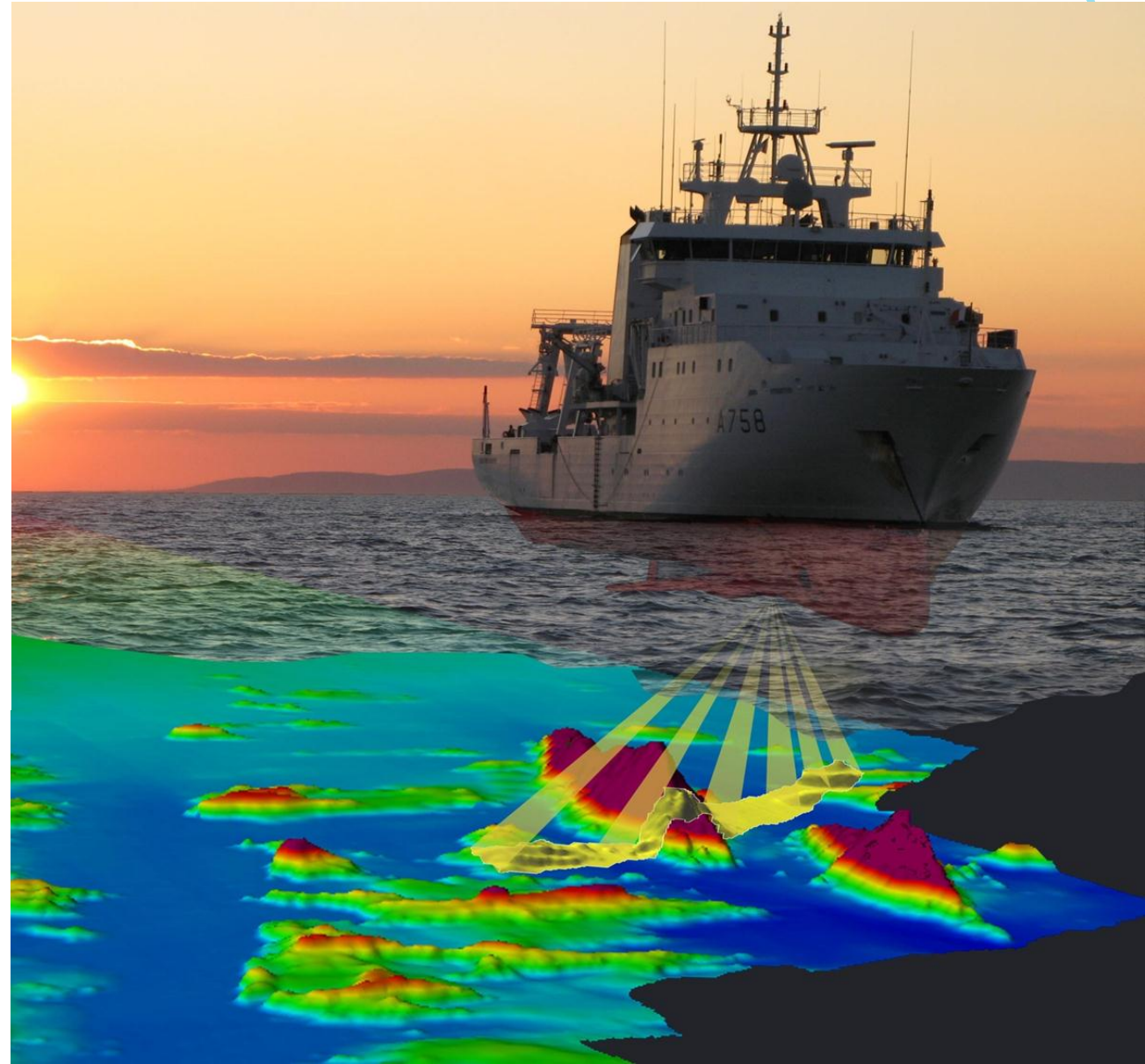
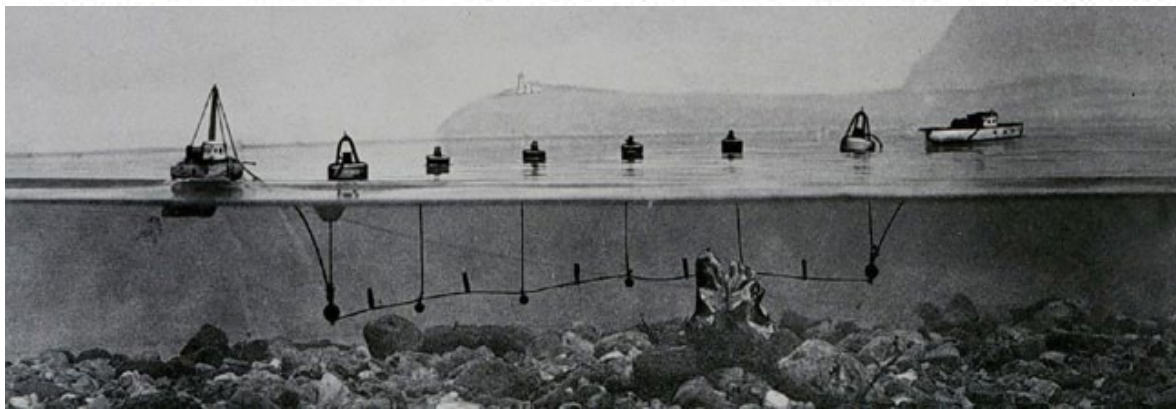
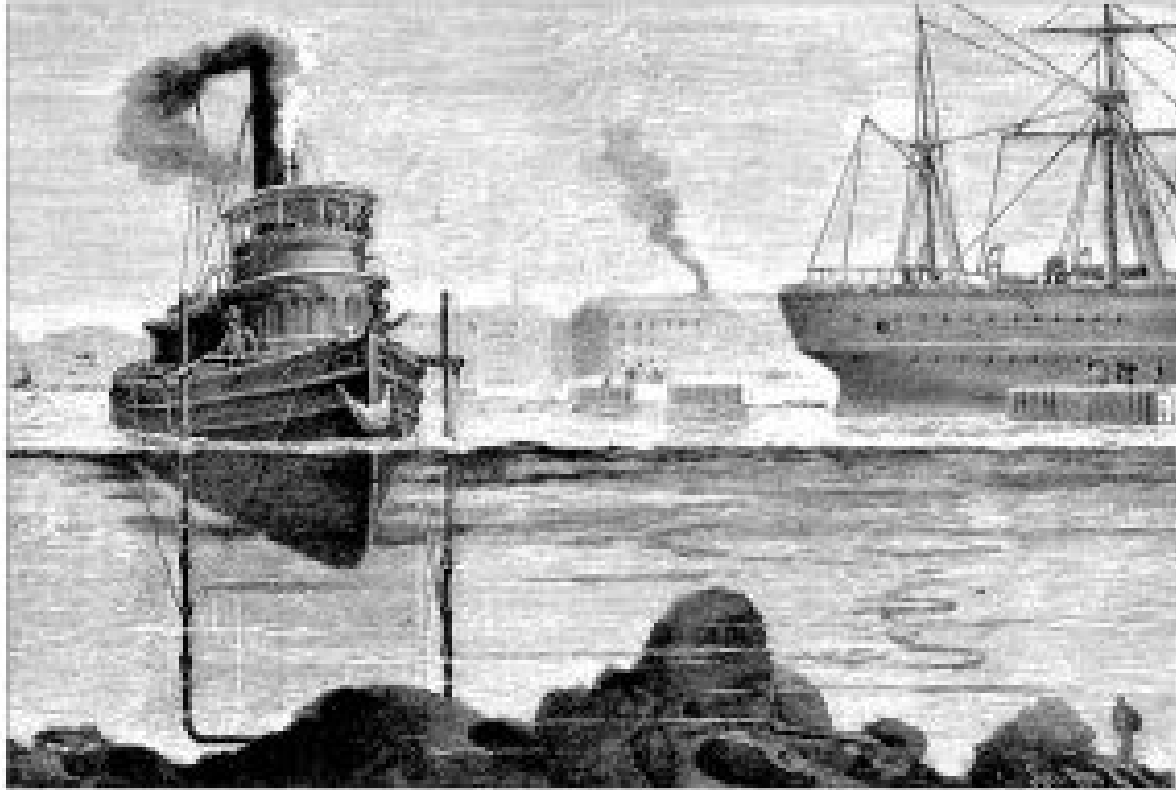
Webinar - EMODnet

A decade of achievements
connecting marine data to knowledge

Iain Shepherd

European Commission
Directorate General for Maritime Affairs and Fisheries

centuries of charting for navigation



e-mail 9 March 2016

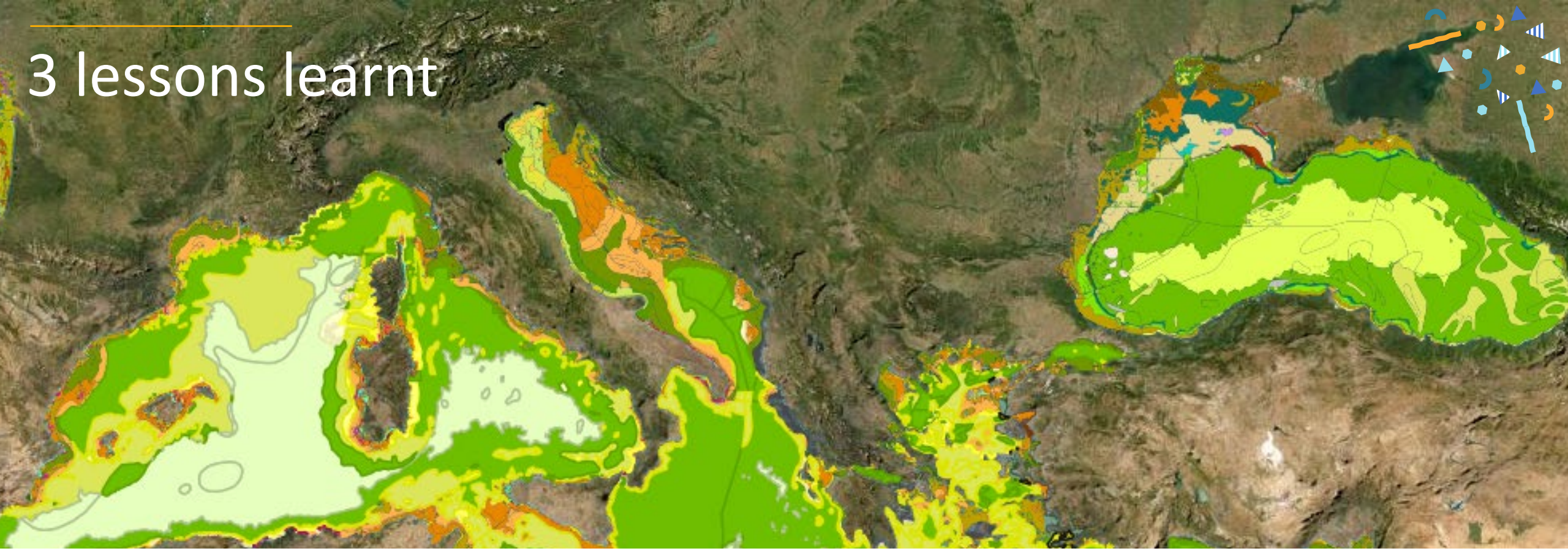


I have recently been developing a storm surge model and was originally using the NOOS bathymetry, and finding considerable errors in the phase speed of the tide. I then ran a test using the EMODnet bathymetry and found this massively improved things.



Rachel Furner Surge Modelling Scientist, UK Met Office

3 lessons learnt



- data collected for one purpose can be used for another
- open data can lead to unforeseen benefits
- EMODnet couldn't have happened without EU but contribution of neighbours is important too



www.emodnet.eu

Your gateway to marine data in Europe

